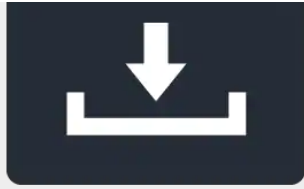




Yamaha > Productos > Sonido profesional > Altavoces > Serie NS-IC

NS-IC Series

		✕	✕	✕	✕
			NS-IC800	NS-IC600	NS-IC400
Specific	Specifications				
Tipo	Tipo	al	2-way coaxial	2-way coaxial	Full range open back type
Woofe	Woofe	PP ne) mica	8" (20 cm) PP (polypropylene) mica cone	6.5" (16 cm) PP (polypropylene) mica cone	4" (10cm) double-layered cone
Tweete	Tweete	cm) fluid- dome, swivel	1" (2.5 cm) fluid-cooled soft dome, swivel	1" (2.5 cm) fluid-cooled soft dome, coaxial, swivel	-
Frequ	Frequency Response	Hz	50 Hz – 28 kHz	65 Hz – 28 kHz	95 Hz - 40 kHz
Maxim	Maximum Input Power		140 W	110 W	90 W
Sensit	Sensitivity		90 dB	90 dB	85 dB
Imped	Impedance		8 ohms	8 ohms	8 ohms
Dimen	Dimensions (W x H x D)	5/8"; Φ242 x	Φ11-1/8" x 4-3/4"; Φ283 x 120 mm	Φ9-1/2" x 4-5/8"; Φ242 x 119 mm	Φ5-7/8" x 3-3/8"; Φ150 x 86.5 mm
Mount	Mounting Depth	mm)	4-1/4" (109 mm)	4-1/4" (109 mm)	3-1/8" (79 mm)
Weight	Weight	g)	4.2 lbs. (1.9 kg)	3.3 lbs. (1.5 kg)	1.8 lbs. (0.8 kg)
Cross	Crossover Frequencies		12.5 kHz (HP), 1.5 kHz (LP)	12.5 kHz (HP), 1.5 kHz (LP)	12.5 kHz (HP), 1.5 kHz (LP)
Gener	General specifications				
I/O	I/O connectors				
connectors	-		Push Terminal (Applicable Cable *Max, Twisted wire : 8mm ² / AWG 8)	Push Terminal (Applicable Cable *Max, Twisted wire : 8mm ² / AWG 8)	Push Terminal (Applicable Cable *Max, Twisted wire : 8mm ² / AWG 8)



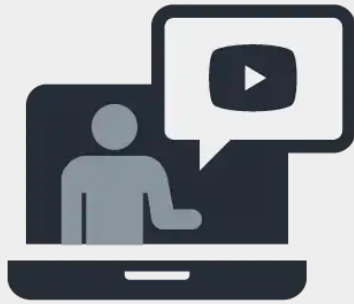
Descargas



Noticias y eventos



Casos de estudio



Formación y soporte



Contenido Especial



Acerca de

[Yamaha](#) ▶ [Productos](#) ▶ [Sonido profesional](#) ▶ [Altavoces](#) ▶ [Serie NS-IC](#)